



*Herbie Clip® & Ezyclick® Pneumatic  
Piston & Calliper Tools*



*Operation, Parts & Safety Manual  
Original Instructions*





## Tooling

Depending on set up, the selected tool is designed to assemble either Herbie Clip® or Ezyclik® hose clamps. Follow the instructions described to achieve safe operation.



## Operation

- 1.1 Safety, Maintenance & Preparation
- 1.2 Using the Tool

## Options

- 2.1 Hose Clamp Compatibility
- 2.2 Handle Assembly Variants

## Parts List

- 3.1 Piston Tool Options
- 3.2 Calliper Tool Options
- 3.3 Calliper Tool Dry Cycle Options
- 3.4 Ezyclik Calliper Tool Options
- 3.5 Pneumatic – Gun Grip Handle
- 3.6 Pneumatic – Straight Grip Handle
- 3.7 Pneumatic – Vertical Grip Handle
- 3.8 Electro-Pneumatic – Gun Grip Handle
- 3.9 Electro-Pneumatic – Straight Grip Handle
- 3.10 Electro-Pneumatic – Vertical Grip Handle





Read these instructions carefully:

### 1. TOOL MISUSE

The tool should only be used to fit the hose clamp for which it has been designed.



### 2. EYE INJURY HAZARD

Failure to wear safety glasses with side shields can result in eye injury or blindness. Always wear safety glasses with side shields which conform to ANSI Standard Z87.1 or EN 166.



### 3. HAND INJURY HAZARD

Care should be taken at all times to keep hands and fingers clear of the moving parts of the tool. The tool must be held by the handle. If two handed operation is required, then the tool should be held by the handle and cylinder body. It is strongly recommended that the operator wear protective gloves.

### 4. NOISE HAZARD

- Sound pressure level is less than 70dBA
- Vibration level is less than 2.5 ms<sup>-2</sup>

### 5. MAINTENANCE

- |                     |  |
|---------------------|--|
| 50,000 operations:  | - Inspect internal piston assembly for wear and replace as necessary. Take care when removing internal piston assembly, as return spring can fly out. Clean and re-grease internal piston assembly and cylinder bore upon re-assembly. |
| 500,000 operations: | - Replace piston O-ring. Clean and re-grease internal piston assembly and cylinder bore upon re-assembly.  |

### Air Preparation

To perform correctly, this pneumatic tool requires a continuous flow of clean, dry air at a suitable pressure. **The tool inlet connection is a 1/8" female BSP parallel thread.**

### Air Flow

The connection to the tool is via a 2m or 4m flexible hose with a minimum ID of 4mm.

### Air Filter

For best results, use a 50 micron filter or better.

### Air Lubricator

Air lubrication is not required when using these tools.

### Pressure Regulator

A pressure regulator is essential for controlling the performance of the tool and should be mounted as close to the tool as possible, preferably within 3m (10ft). **The regulator should have a safe working pressure in excess of 10 bar.**



## Recommended Accessories

### **HCL Electro-Pneumatic Control Unit (PT-CB-02)**

*In repeatable production situations where controlling the quality of a process is important, connecting the pneumatic tool to the HCL Electro-Pneumatic Tool Control Unit offers a practical and repeatable solution.*

#### **Features**

- HMI touch screen control
- Digital control of air pressure
- Digital control of clamping time
  - Dry cycle detection
- In process advisory information screens
  - Batch and unit count control
  - Supervisory control

#### **Counter Balance**

*HCL recommends the use of a counterbalance with the HCL range of pneumatic and Electro pneumatic tools.*



*For full operational instructions refer to "HCL Electro-Pneumatic Tool Control Unit Manual"*





# OPERATION

## Using the tool

### Selecting Tool Head Option

*Refer to the Hose Clamp Compatibility page (section 2.1) of this manual to reference the most suitable tool for chosen clip.*



### Initial Set Up

*Note. This should be carried out for each new size of clip being utilised.*

*Fit the clip to the application and close the clip by hand so that at least one tooth is engaged.*



*Fit the tool head over the clamp head and operate the tool.*

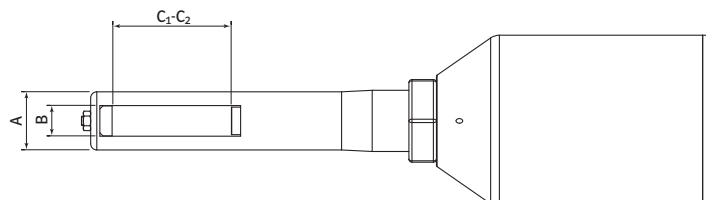
*To initially set the correct clamping force, increase the input pressure gradually until the clip closes to the required tightness.*



# OPTIONS

## Hose Clamp Compatibility

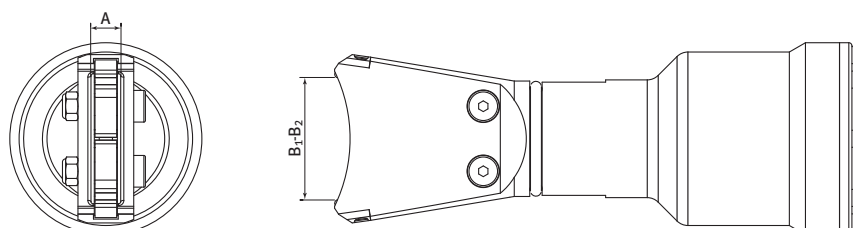
### Herbie Clip® Piston Tool



Description	External Head Width (A)		Internal Head Width (B)		Piston Closing Range (C <sub>1</sub> - C <sub>2</sub> )		Recommended Herbie Clip Size Range*
	mm	inch	mm	inch	mm	inch	
Small, Thin-nosed Head	12.6	0.50	8.5	0.33	(10.0 - 40.0)	(0.39 - 1.57)	A - M
Small Head	16.0	0.63	8.5	0.33	(10.0 - 40.0)	(0.39 - 1.57)	A - M
Medium Head	19.0	0.75	10.0	0.39	(11.5 - 41.5)	(0.45 - 1.63)	C - R
Large Head	22.0	0.87	11.5	0.45	(14.5 - 54.0)	(0.57 - 2.13)	N - 85
Large, Long Head	22.0	0.87	11.5	0.45	(26.0 - 65.5)	(1.02 - 2.58)	N - 109

\*Tools may be used outside of the Recommended Herbie Clip Size Range, if the working head widths allow, i.e. the starting head width and tightened head width are inside the Piston Closing Range

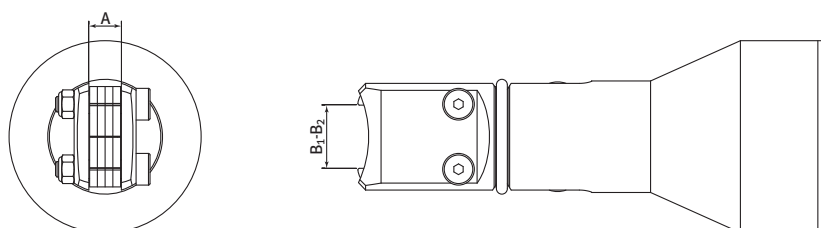
### Herbie Clip® Calliper Tool



Description	Internal Calliper Width (A)		Calliper Closing Range (B <sub>1</sub> - B <sub>2</sub> )		Recommended Herbie Clip Size Range*
	mm	inch	mm	inch	
Small Body	9.6	0.38	(20.5 - 39.5)	(0.81 - 1.56)	F - T
Medium Body	10.0	0.39	(29.0 - 49.0)	(1.14 - 1.93)	U - 64
Large Body	10.0	0.39	(36.0 - 56.5)	(1.42 - 2.22)	66 - 85
Dual Direction Body	No limit	No limit	(29.0 - 48.0)	(1.14 - 1.89)	N - V

\*Tools may be used outside of the Recommended Herbie Clip Size Range, if the working head widths allow, i.e. the starting head width and tightened head width are inside the Calliper Closing Range

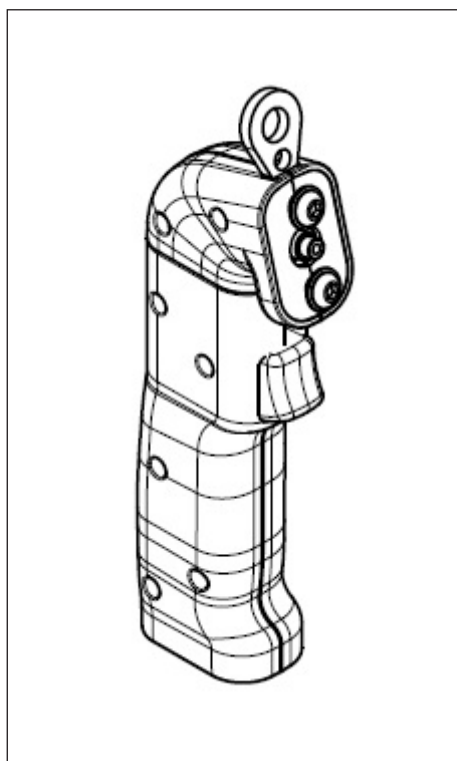
### Ezyklik® Calliper Tool



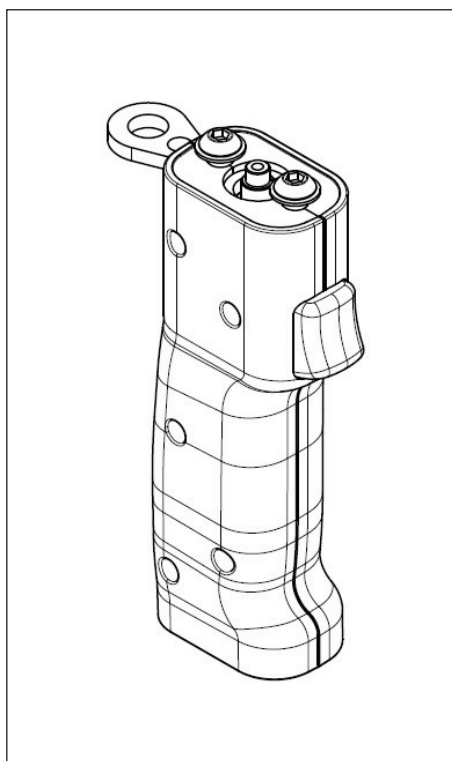
Description	Internal Calliper Width (A)		Calliper Closing Range (B <sub>1</sub> - B <sub>2</sub> )		Recommended Ezyklik Size Range
	mm	inch	mm	inch	
Ezyklik Calliper Tool	10.4	0.41	(7.2 - 18.7)	(0.28 - 0.74)	All Current Sizes

# HEAD OPTIONS

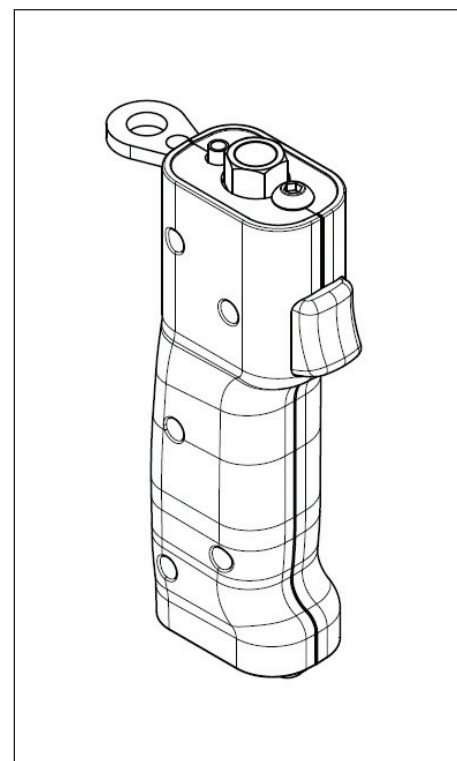
## Handle Assembly Variants



Gun Grip



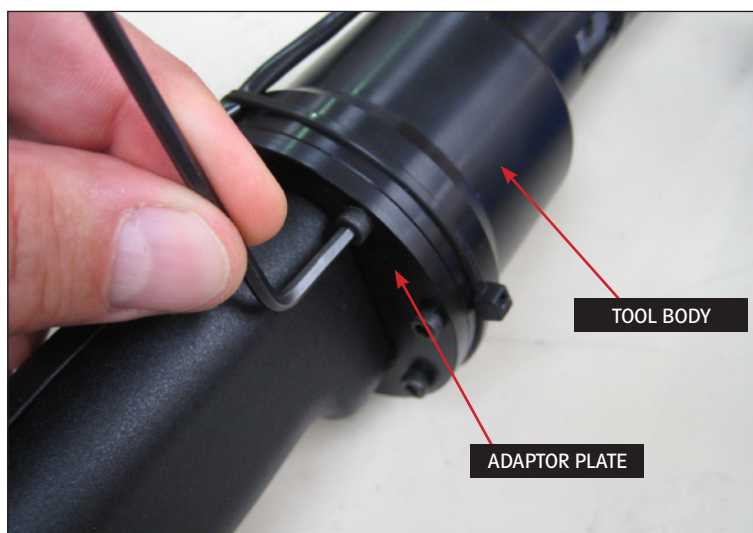
Straight Grip



Vertical Grip

### Handle Position

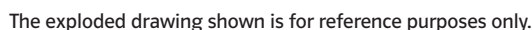
*The angular position of the handle can be adjusted to suit the application by removing the 8-off 3mm x 10mm cap screws from the Adaptor Plate (Ref. item PRT1309 in the parts list section) and rotating the plate about the body of the tool.*





## Piston Tool Options

Item	Part Number	Title	Qty
8	PRT1479 PRT1483 PRT1486	Shaft, Piston Tool, Small Shaft, Piston Tool, Medium Shaft, Piston Tool, Large	1
9	PRT1480	Piston Stop	1
10	MAXI-PISTON_ RETURN_SPRING	Maxi Piston, Return Spring	1
11	PRT1309	Adaptor Plate, Pneumatic Tool Body	1
12	CPS_M3X10_12-9	Cap Screw, SKT HD, M3x10LG, 12.9	8



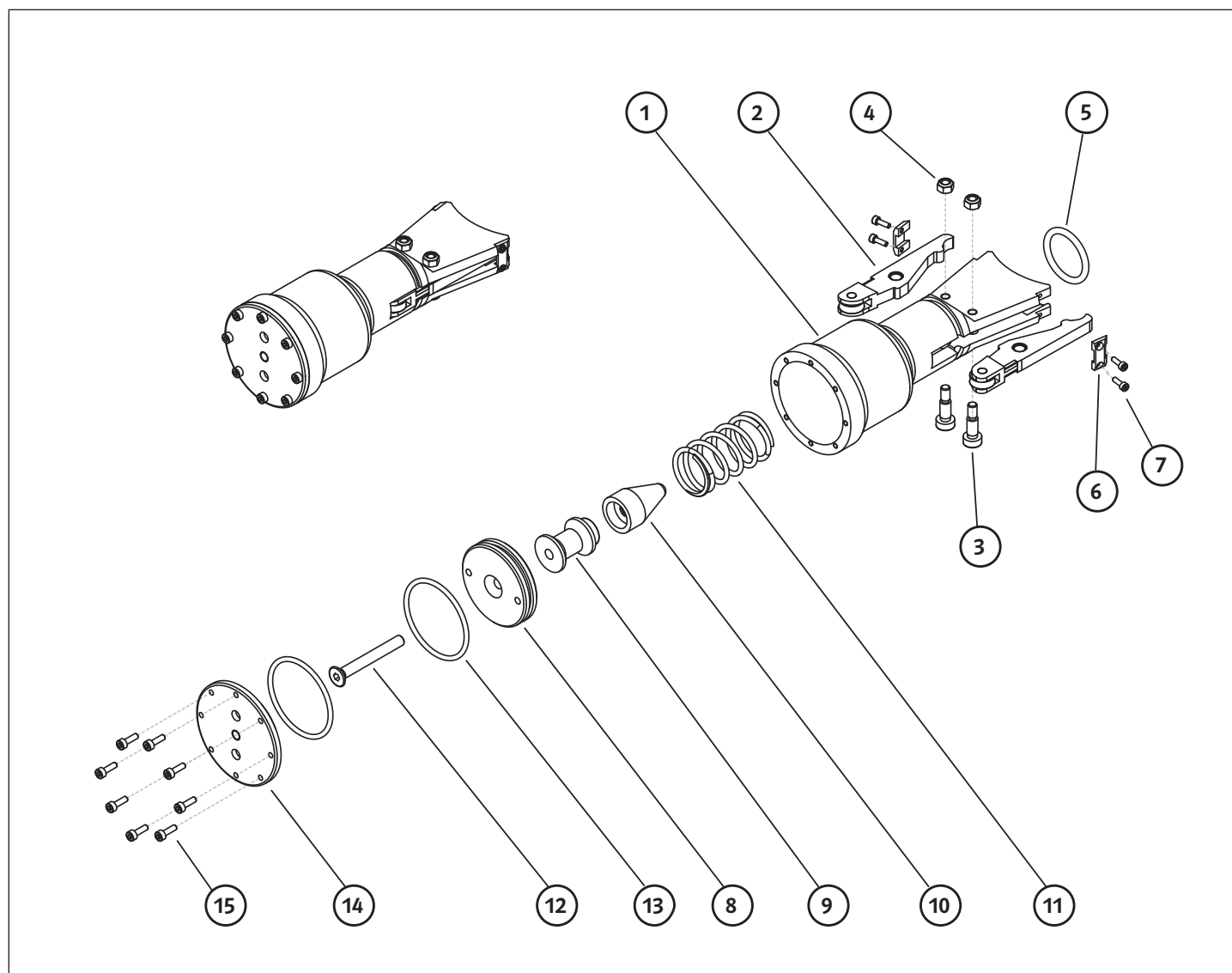
# PARTS LIST

## Calliper Tools – Small/Medium/Large/Dual Direction

Item	Part Number	Title	Qty
1	PRT1456	Main Body, Calliper Tool, Small	1
	PRT1464	Main Body, Calliper Tool, Medium	
	PRT1466	Main Body, Calliper Tool, Large	
	PRT1468	Main Body, Calliper Tool, Dual Direction	
2	ASM1120	Jaw Assembly, Small	2
	ASM1122	Jaw Assembly, Medium	
	ASM1124	Jaw Assembly, Large	
	ASM1126	Jaw Assembly, Dual Direction	
3	SHS_M5X12_12-9	Shoulder Screw, SKT HD, M5x12LG, 12.9	2
4	NUT_NYLOC_HEX_M5_BZP	Nut, Nyloc, Hexagon, M5, BZP	2
5	ORG_02657X353_BS215_EPDM70A	O-Ring, BS215, 26.57IDx3.53CS, EPDM 70A	1
6	PRT1457	Grooved Strut	2

## Calliper Tool Options

Item	Part Number	Title	Qty
7	CPS_M2-5X8_12-9	Cap Screw, SKT HD, M2.5x8LG, 12.9	4
8	PRT1463	Piston, Dia 50 Piston Tool	1
9	PRT1462	Piston Shaft	1
10	PRT1461	Piston Point	1
	PRT1487	Piston Point, Dual Direction	
11	PRT1114	Spring, Compression	1
12	CSK_M6X50_SS	Countersunk Screw, SKT HD, M6x50LG, SS	2
13	ORG_04412X262_BS132_N70A	O-Ring, BS132, 44.12IDx2.62CS, Nitrile 70A	2
14	PRT1309	Adaptor Plate, Pneumatic Tool Body	1
15	CPS_M3X10_12-9	Cap Screw, SKT HD, M3x10LG	8



The exploded drawing shown is for reference purposes only.

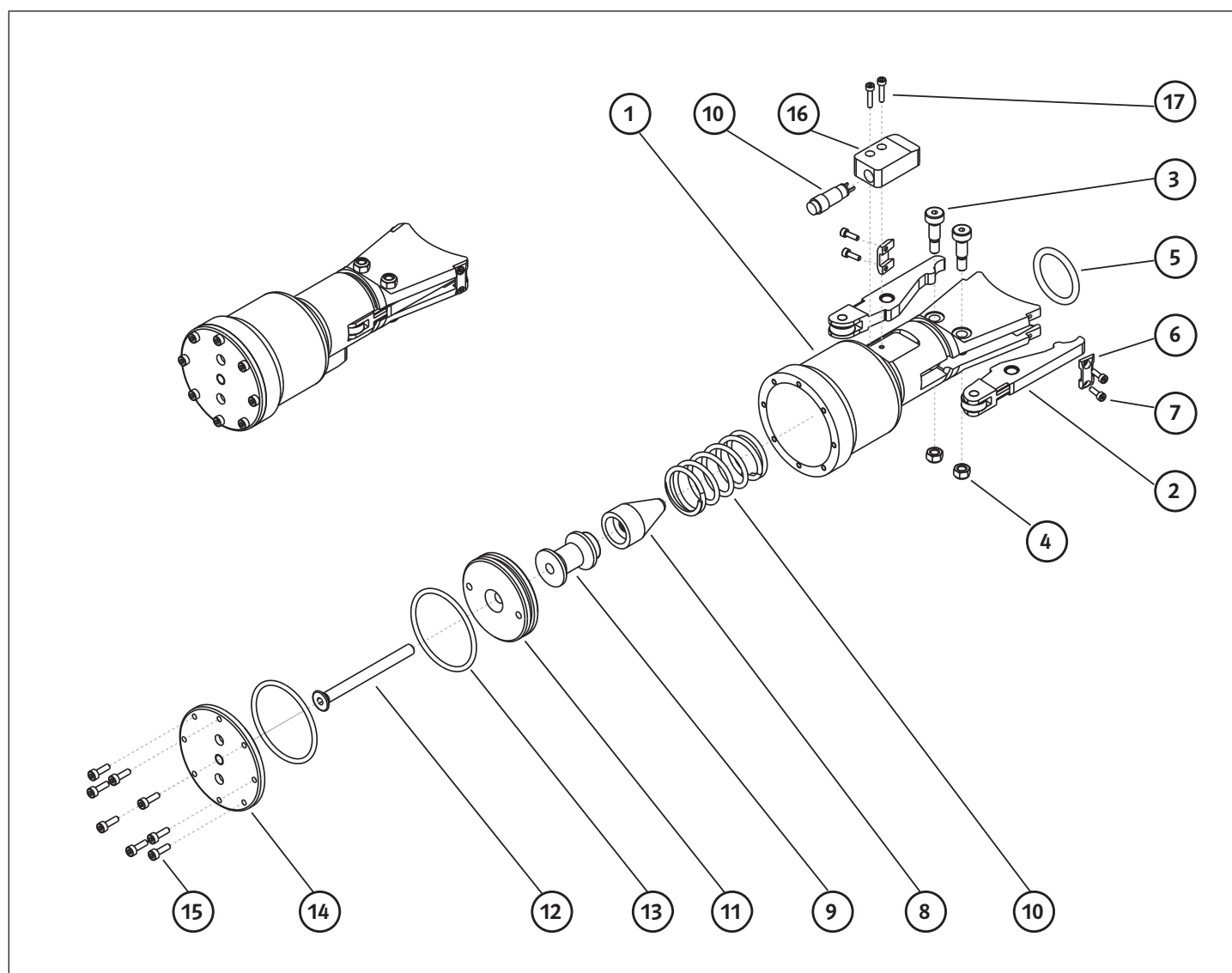
# PARTS LIST

## Calliper Tools Dry Cycle – Small/Medium/Large/ Dual Direction

Item	Part Number	Title	Qty
1	PRT1442	Main Body, Calliper Tool, Small, Dry Cycle	1
	PRT1443	Main Body, Calliper Tool, Medium, Dry Cycle	
	PRT1444	Main Body, Calliper Tool, Large, Dry Cycle	
	PRT1445	Main Body, Calliper Tool, Dual Direction, Dry Cycle	
2	ASM1120	Jaw Assembly, Small	2
	ASM1122	Jaw Assembly, Medium	
	ASM1124	Jaw Assembly, Large	
	ASM1126	Jaw Assembly, Dual Direction	
3	SHS_M5X12_12-9	Shoulder Screw, SKT HD, M5x12LG, 12.9	2
4	NUT_NYLOC_HEX_M5_BZP	Nut, Nyloc, Hexagon, M5, BZP	2
5	ORG_02657X353_BS215_EPDM70A	O-Ring, BS215, 26.57IDx3.53CS, EPDM 70A	1
6	PRT1457	Grooved Strut	2
7	CPS_M2-5X8_12-9	Cap screw, SKT HD, M2.5x8LG, 12.9	4

## Calliper Tool Dry Cycle Options

Item	Part Number	Title	Qty
8	PRT1461	Piston Point	1
	PRT1487	Piston Point, Dual Direction	
9	PRT1462	Piston Shaft	1
10	PRT1114	Spring, Compression	1
11	PRT1463	Piston, Dia 50 Piston Tool	1
12	CSK_M6X70_SS	Countersunk Screw, SKT HD, M6x70LG, SS	2
13	ORG_04412X262_BS132_N70A	O-Ring, BS132, 44.12IDx2.62CS, Nitrile 70A	2
14	PRT1309	Adaptor Plate, Pneumatic Tool Body	1
15	CPS_M3X10_12-9	Cap Screw, SKT HD, M3x10LG	8
16	PRT1446	Body Sensor, Switch Holder	1
17	CPS_M2-5X12_SS	Cap Screw, SKT HD, M2.5x12LG, SS	2
18	PRT1498	Switch, Push Button, Normally Open, Off	1



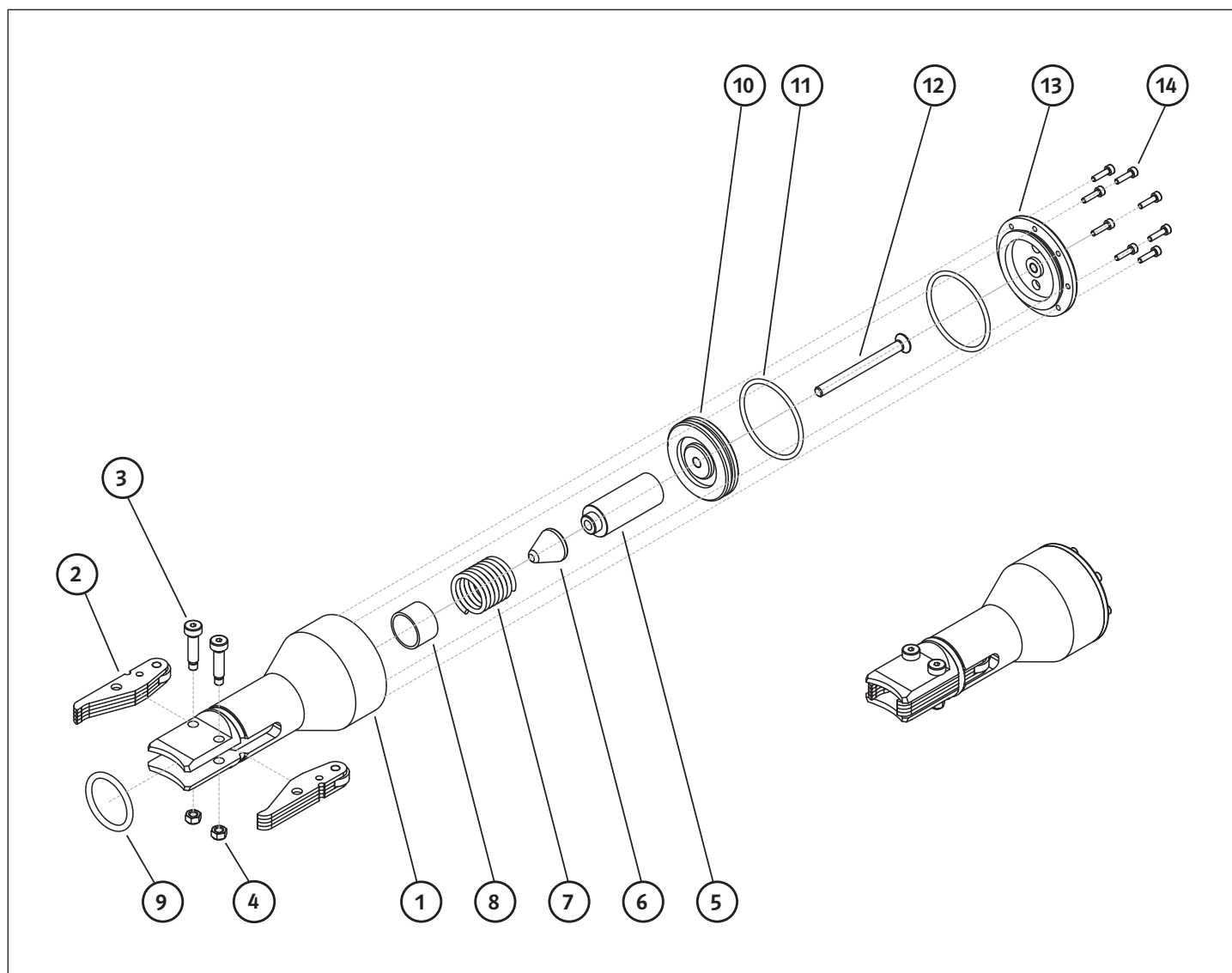
The exploded drawing shown is for reference purposes only.

# PARTS LIST

## Ezyklik Calliper Tool Options

Item	Part Number	Title	Qty
1	585B-02	Housing, Main Body, Ezyklik Calliper Tool	1
2	585C-02	Jaw, Ezyklik Calliper Tool	2
3	SHS_M5X20_12-9_6MM_THREAD	Shoulder Screw, SKT HD, M5x20LG, 12.9	2
4	NUT_NYLOC_HEX_M5_BZP	Nut, Nyloc, Hexagon, M5, BZP	2
5	585E-02	Shaft, Ezyklik Calliper Tool	1
6	585F-02	Piston Point, Ezyklik Calliper Tool	1
7	RETURN_SPRING_M527010	Spring, Extension	1
8	BEARING_MB2015DU	Bearing, DU	1

Item	Part Number	Title	Qty
9	ORG_02657X353_BS215_EPDM70A	O-Ring, BS215, 26.57IDx3.53CS, EPDM 70A	1
10	LPAT_PISTON_480	Piston, Ø50 Piston Tool	1
11	ORG_04412X262_BS132_N70A	O-Ring, BS132, 44.12LDx2.62CS, Nitrile 70A	2
12	CSK_M6X70_FULL_SS	Countersunk Screw, SKT HD, M6X70LG, Full Thread, SS	1
13	PRT1309	Adaptor plate, pneumatic tool body	1
14	CPS_M3X12_12-9	Capscrew, SKT HD, M3x12LG, 12.9	8

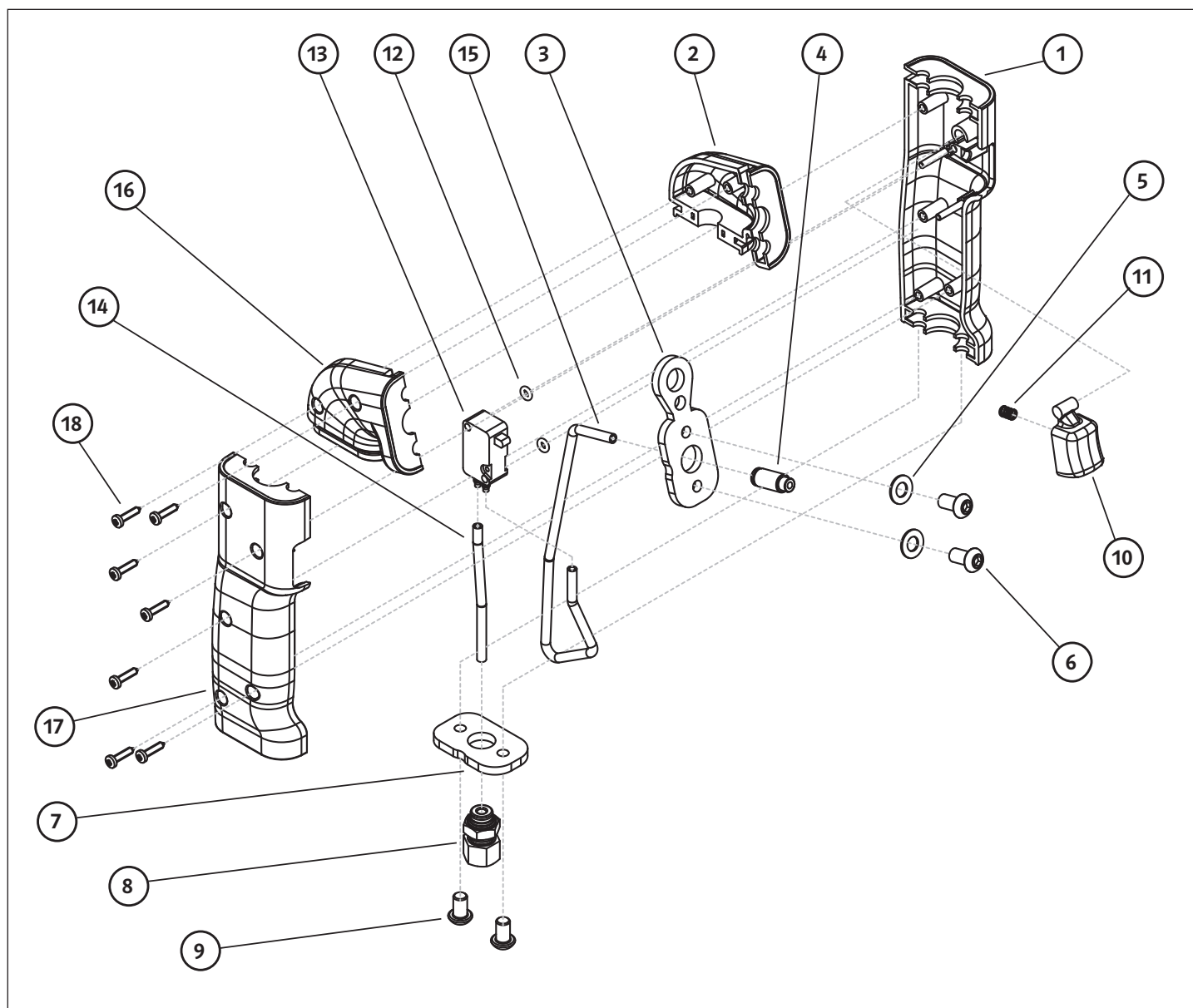


# PARTS LIST

## Electro-Pneumatic – Gun Grip Handle

Item	Part Number	Title	Qty
1	PRT1302	Handle, Half Shell, Left	1
2	PRT1304	Gun Grip Adaptor, Half Shell, Left	1
3	PRT1308	Adaptor Plate, Insert	1
4	PRT1310	Adaptor, M6 Male to 4mm One-Touch	1
5	WAS_FLAT_M6_FIBRE	Washer, Flat, M6, Fibre	2
6	BHS_M6X12_SS	Buttonhead Screw, SKT HD, M6x12LG, SS	2
7	PRT1307	Adaptor Plate, Insert	1
8	PRT1311	Bulkhead Adaptor, 1/8" BSPP Female to 4mm One-Touch	1
9	BHS_M6X10_SS	Buttonhead Screw, SKT HD, M6x10LG, SS	2
10	PRT1306	Trigger	1

Item	Part Number	Title	Qty
11	PRT1319	Trigger Spring, OD 4.6mm, 6.4mm Long, 0.42mm Wire Size	1
12	ORG_00290X178_BS006_N70A	O-Ring, BS006, 2.90LDx1.78CS, Nitrile 70A	2
13	PRT1312	Pneumatic Valve, 3/2, 4mm BARB	1
14	PRT1315	PU Tube, OD 4mm, 70mm Long, Black	1
15	PRT1318	PU Tube, OD 4mm, 245mm Long, Black	1
16	PRT1305	Gun Grip Adaptor, Half Shell, Right	1
17	PRT1303	Handle, Half Shell, Right	1
18	STS_2-9X13_PNHD_POZI_D7981_SS	Self Tapping Screw, 2.9x13, Pan Pozidriv, SS Generic	7



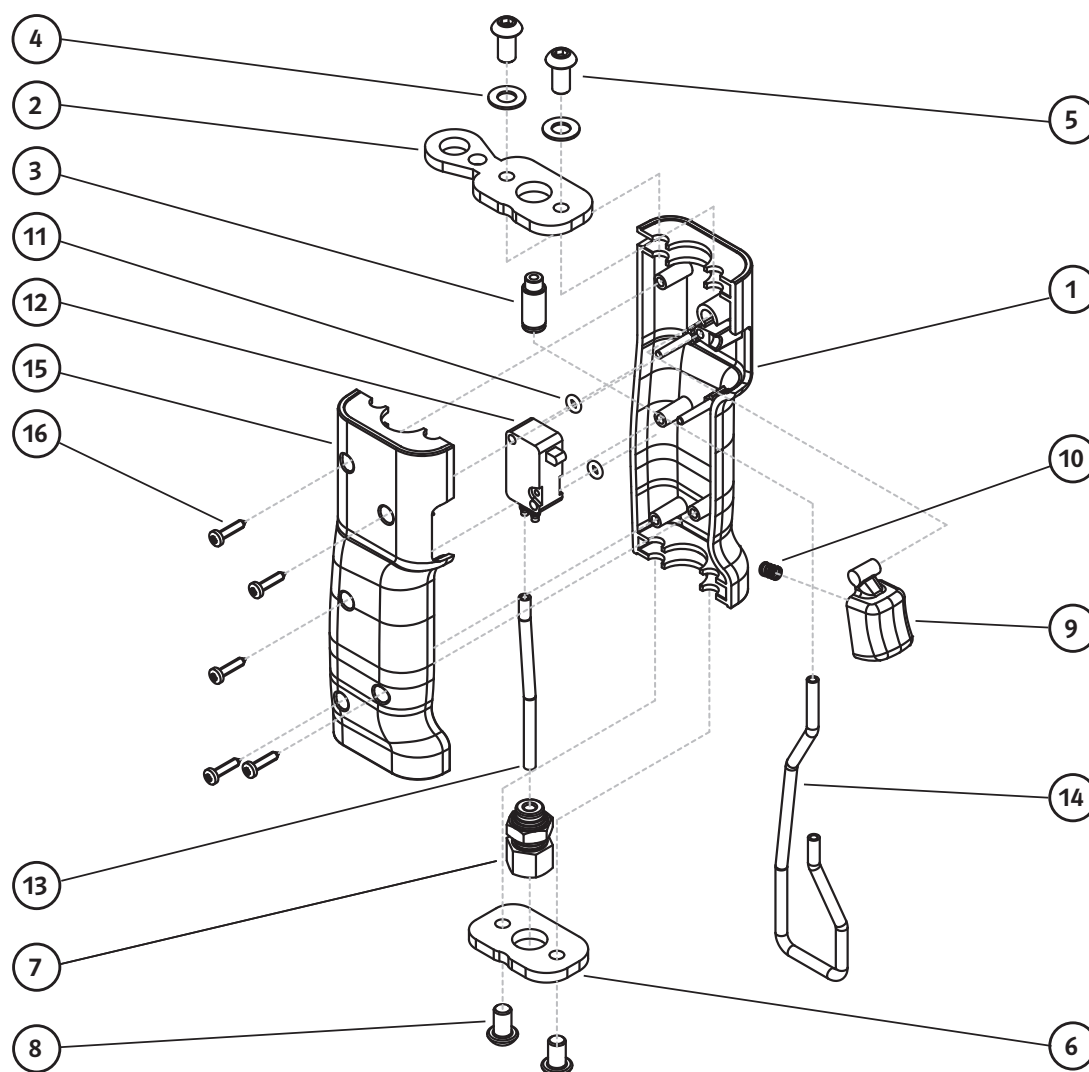


# PARTS LIST

## Electro-Pneumatic – Straight Grip Handle

Item	Part Number	Title	Qty
1	PRT1302	Handle, Half Shell, Left	1
2	PRT1308	Adaptor Plate, Insert	1
3	PRT1310	Adaptor, M6 Male to 4mm One-Touch	1
4	WAS_FLAT_M6_FIBRE	Washer, Flat, M6, Fibre	2
5	BHS_M6X12_SS	Buttonhead Screw, SKT HD, M6x12LG, SS	2
6	PRT1307	Adaptor Plate, Insert	1
7	PRT1311	Bulkhead Adaptor, 1/8" BSPP Female to 4mm One-Touch	1
8	BHS_M6X10_SS	Buttonhead Screw, SKT HD, M6x10LG, SS	2
9	PRT1306	Trigger	1

Item	Part Number	Title	Qty
10	PRT1319	Trigger Spring, OD 4.6mm, 6.4mm Long, 0.42mm Wire Size	1
11	ORG_00290X178_BS006_N70A	O-Ring, BS006, 2.90LDx1.78CS, Nitrile 70A	2
12	PRT1312	Pneumatic Valve, 3/2, 4mm BARB	1
13	PRT1315	PU Tube, OD 4mm, 70mm Long, Black	1
14	PRT1314	PU Tube, OD 4mm, 210mm Long, Black	1
15	PRT1303	Handle, Half Shell, Right	1
16	STS_2-9X13_PNHD_POZI_D7981_SS	Self Tapping Screw, 2.9x13, Pan Pozidriv, SS Generic	5

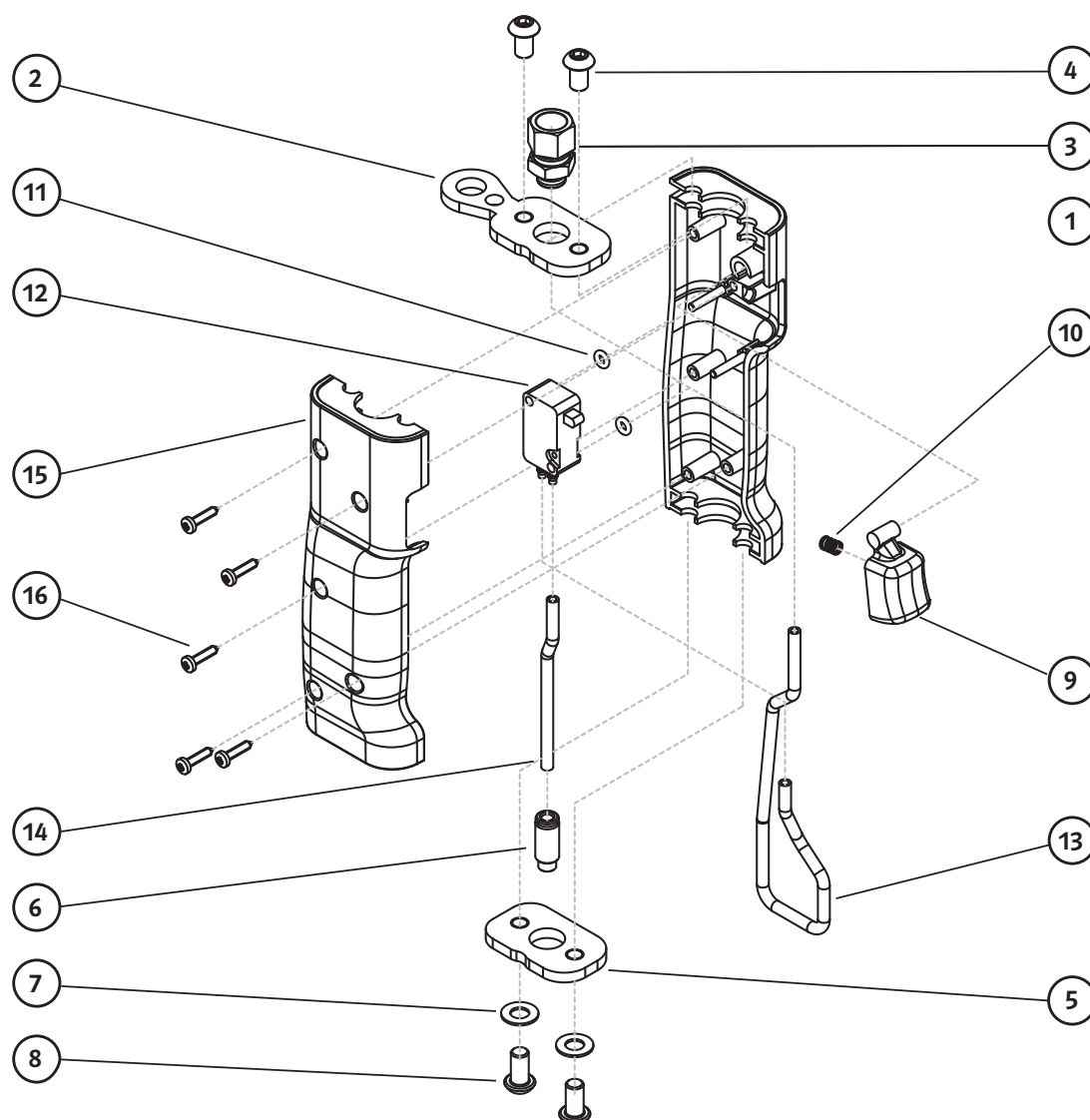


# PARTS LIST

## Pneumatic - Vertical Grip Handle

Item	Part Number	Title	Qty
1	PRT1302	Handle, Half Shell, Left	1
2	PRT1308	Adaptor Plate, Insert	1
3	PRT1311	Bulkhead Adaptor, 1/8" BSPP Female to 4mm One-Touch	1
4	BHS_M6X10_SS	Buttonhead Screw, SKT HD, M6x10LG, SS	2
5	PRT1307	Adaptor Plate, Insert	1
6	PRT1310	Adaptor, M6 Male to 4mm One-Touch	1
7	WAS_FLAT_M6_FIBRE	Washer, Flat, M6, Fibre	2
8	BHS_M6X12_SS	Buttonhead Screw, SKT HD, M6x12LG, SS	2
9	PRT1306	Trigger	1

Item	Part Number	Title	Qty
10	PRT1319	Trigger Spring, OD 4.6mm, 6.4mm Long, 0.42mm Wire Size	1
11	ORG_00290X178_BS006_N70A	O-Ring, BS006, 2.90LDx1.78CS, Nitrile 70A	2
12	PRT1312	Pneumatic Valve, 3/2, 4mm BARB	1
13	PRT1316	PU Tube, OD 4mm, 210mm Long, Black	1
14	PRT1317	PU Tube, OD 4mm, 70mm Long, Black	1
15	PRT1303	Handle, Half Shell, Right	1
16	STS_2-9X13_PNHD_POZI_D7981_SS	Self Tapping Screw, 2.9x13, Pan Pozidriv, SS Generic	5

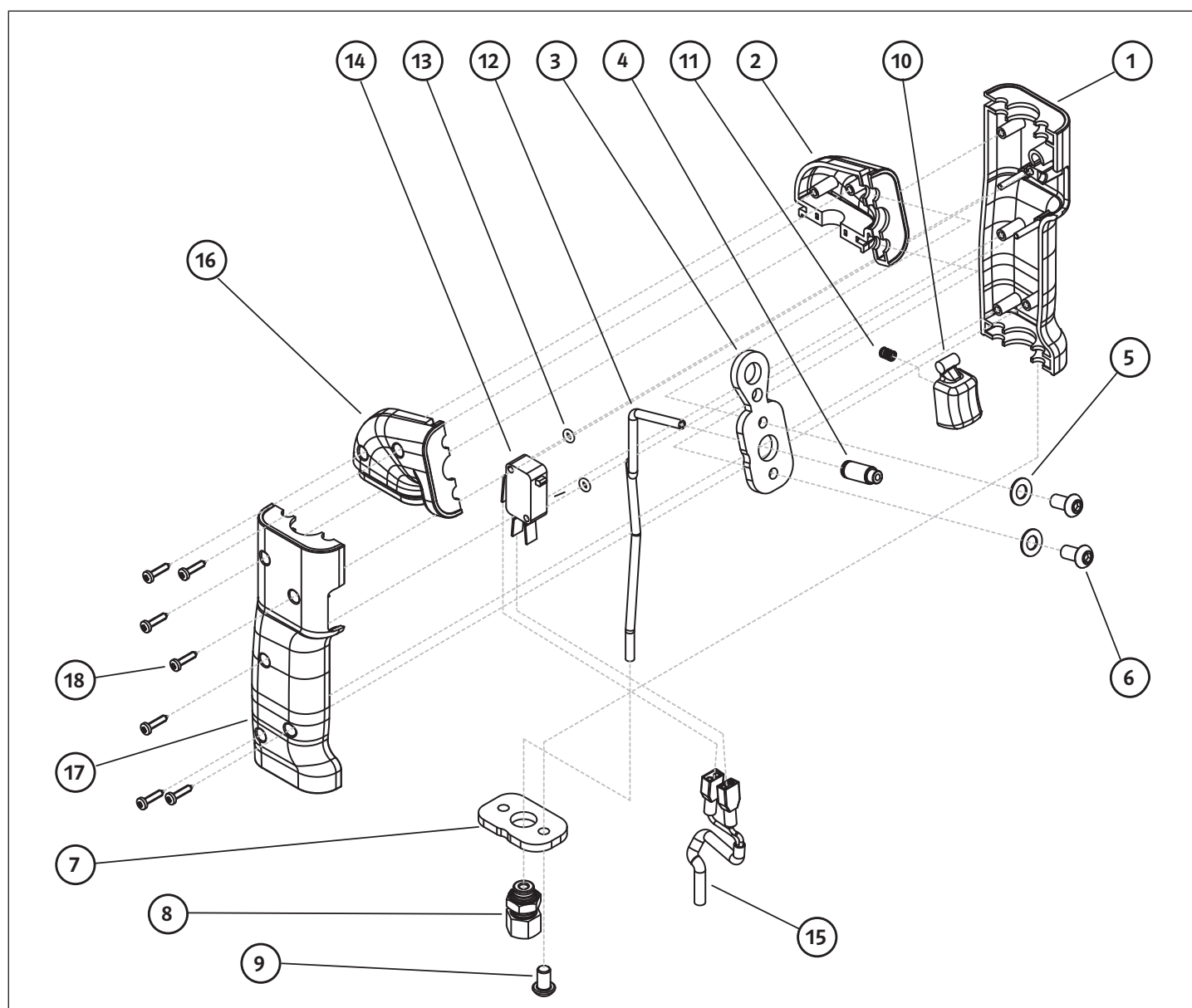


# PARTS LIST

## Electro-Pneumatic – Gun Grip Handle

Item	Part Number	Title	Qty
1	PRT1302	Handle, Half Shell, Left	1
2	PRT1304	Gun Grip Adaptor, Half Shell, Left	1
3	PRT1308	Adaptor Plate, Insert	1
4	PRT1310	Adaptor, M6 Male to 4mm One-Touch	1
5	WAS_FLAT_M6_FIBRE	Washer, Flat, M6, Fibre	2
6	BHS_M6X12_SS	Buttonhead Screw, SKT HD, M6x12LG, SS	2
7	PRT1307	Adaptor Plate, Insert	1
8	PRT1311	Bulkhead Adaptor, 1/8" BSPP Female to 4mm One-Touch	1
9	BHS_M6X10_SS	Buttonhead Screw, SKT HD, M6x10LG, SS	2
10	PRT1306	Trigger	1

Item	Part Number	Title	Qty
11	PRT1319	Trigger Spring, OD 4.6mm, 6.4mm Long, 0.42mm Wire Size	1
12	PRT1312	PU Tube, OD 4mm, 170mm Long, Black	1
13	ORG_00290X178_BS006_N70A	O-Ring, BS006, 2.90LDx1.78CS, Nitrile 70A	2
14	PRT1320	V3 Microswitch, DT, Button, 10A, 250VAC	1
15	ASM1078	Microswitch Cable, Bottom Feed Assembly	1
16	PRT1305	Gun Grip Adaptor, Half Shell, Right	1
17	PRT1303	Handle, Half Shell, Right	1
18	STS_2-9X13_PNHD_POZI_D7981_SS	Self Tapping Screw, 2.9x13, Pan Pozidriv, SS Generic	7

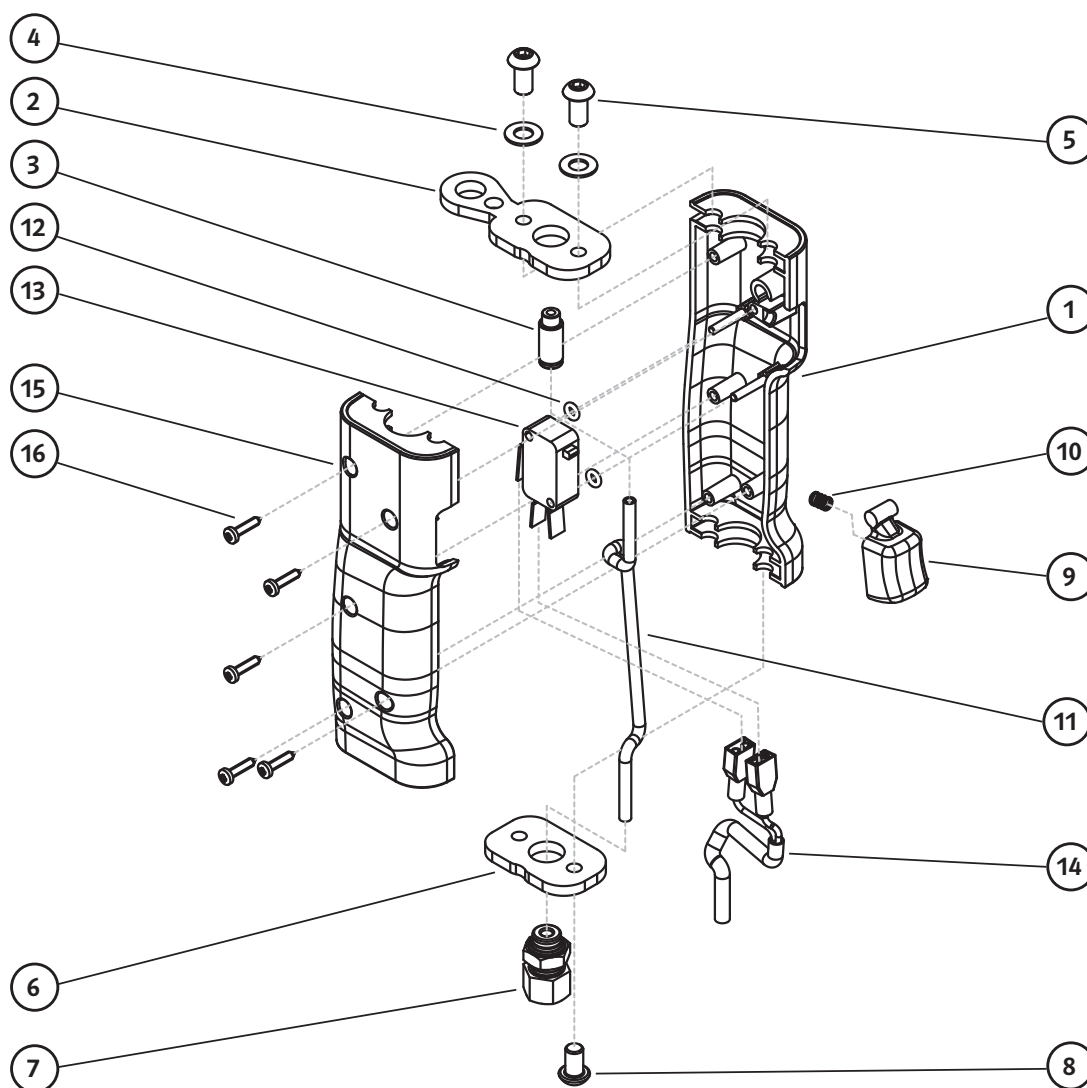


# PARTS LIST

## Electro-Pneumatic – Straight Grip Handle

Item	Part Number	Title	Qty
1	PRT1302	Handle, Half Shell, Left	1
2	PRT1308	Adaptor Plate, Insert	1
3	PRT1310	Adaptor, M6 Male to 4mm One-Touch	1
4	WAS_FLAT_M6_FIBRE	Washer, Flat, M6, Fibre	2
5	BHS_M6X12_SS	Buttonhead Screw, SKT HD, M6x12LG, SS	2
6	PRT1307	Adaptor Plate, Insert	1
7	PRT1311	Bulkhead Adaptor, 1/8" BSPP Female to 4mm One-Touch	1
8	BHS_M6X10_SS	Buttonhead Screw, SKT HD, M6x10LG, SS	1
9	PRT1306	Trigger	1

10	PRT1319	Trigger Spring, OD 4.6mm, 6.4mm Long, 0.42mm Wire Size	1
11	PRT1322	PU Tube, OD 4mm, 135mm Long, Black	1
12	ORG_00290X178_BS006_N70A	O-Ring, BS006, 2.90LDx1.78CS, Nitrile 70A	2
13	PRT1320	V3 Microswitch, DT, Button, 10A, 250VAC	1
14	ASM1078	Microswitch Cable, Bottom Feed Assembly	1
15	PRT1303	Handle, Half Shell, Right	1
16	STS_2-9X13_PNHD_POZI_D7981_SS	Self Tapping Screw, 2.9x13, Pan Pozidriv, SS Generic	5

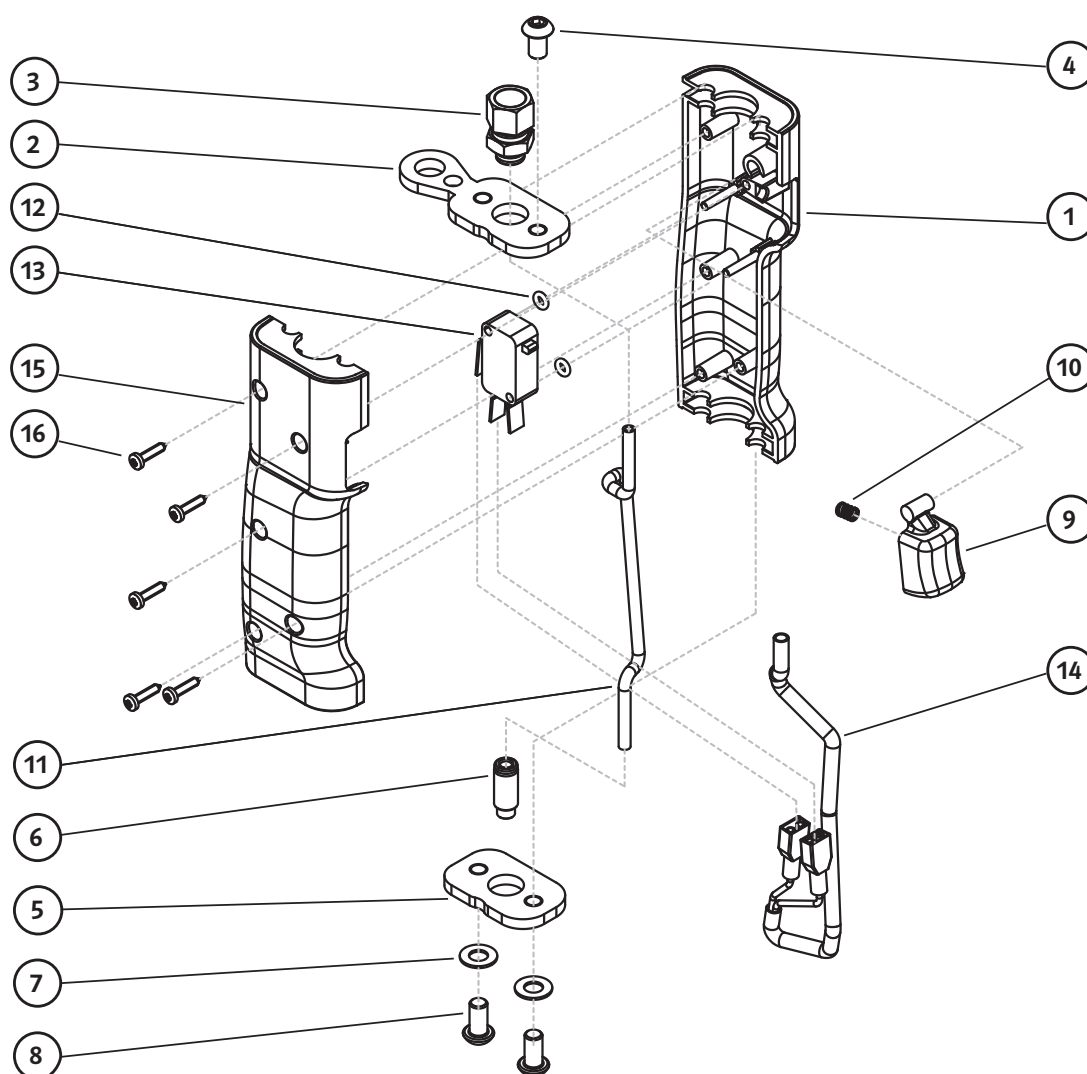


# PARTS LIST

## Electro-Pneumatic – Vertical Grip Handle

Item	Part Number	Title	Qty
1	PRT1302	Handle, Half Shell, Left	1
2	PRT1308	Adaptor Plate, Insert	1
3	PRT1311	Bulkhead Adaptor, 1/8" BSPP Female to 4mm One-Touch	1
4	BHS_M6X10_SS	Buttonhead Screw, SKT HD, M6x10LG, SS	1
5	PRT1307	Adaptor Plate, Insert	1
6	PRT1310	Adaptor, M6 Male to 4mm One-Touch	1
7	WAS_FLAT_M6_FIBRE	Washer, Flat, M6, Fibre	2
8	BHS_M6X12_SS	Buttonhead Screw, SKT HD, M6x12LG, SS	2
9	PRT1306	Trigger	1

Item	Part Number	Title	Qty
10	PRT1319	Trigger Spring, OD 4.6mm, 6.4mm Long, 0.42mm Wire Size	1
11	PRT1322	PU Tube, OD 4mm, 135mm Long, Black	1
12	ORG_00290X178_BS006_N70A	O-Ring, BS006, 2.90LDx1.78CS, Nitrile 70A	2
13	PRT1320	V3 Microswitch, DT, Button, 10A, 250VAC	1
14	ASM1077	Microswitch Cable, Top Feed Assembly	1
15	PRT1303	Handle, Half Shell, Right	1
16	STS_2-9X13_PNHD_POZI_D7981_SS	Self Tapping Screw, 2.9x13, Pan Pozidriv, SS Generic	5







# Declaration of Conformity

**Name of manufacturer:** HCL Fasteners Ltd  
**Address of manufacturer:** First Avenue, Westfield Industrial Estate, Radstock, Bath BA3 4BS, UK  
**Telephone:** +44 (0)1761 417714  
**Email** sales@hcl-clamping.co.uk

I hereby declare that the following machinery complies with all the Essential Health and Safety Requirements of the Machinery Directive 89/392/EEC as amended.

**Machinery description:** Pneumatic tool for hose clamp installation

<b>Tool Type &amp; Size:</b>	<input type="checkbox"/> Eyzclik® Calliper Tool	<b>Herbie Clip® Calliper Tool</b>	<b>Herbie Clip® Piston Tool</b>
	<b>Herbie Clip® Calliper Tool</b>	<b>Dry Cycle</b>	<input type="checkbox"/> Small Thin-nosed Head
	<input type="checkbox"/> Small Body	<input type="checkbox"/> Small Body	<input type="checkbox"/> Small Head
	<input type="checkbox"/> Medium Body	<input type="checkbox"/> Medium Body	<input type="checkbox"/> Medium Head
	<input type="checkbox"/> Large Body	<input type="checkbox"/> Large Body	<input type="checkbox"/> Large Head
	<input type="checkbox"/> Dual Direction Body	<input type="checkbox"/> Dual Direction Body	

<b>Tool Handle (Handle types):</b>	<input type="checkbox"/> Pneumatic – Gun Grip	<input type="checkbox"/> Electro-Pneumatic – Gun Grip
	<input type="checkbox"/> Pneumatic – Straight Grip	<input type="checkbox"/> Electro-Pneumatic – Straight Grip
	<input type="checkbox"/> Pneumatic – Vertical Grip	<input type="checkbox"/> Electro-Pneumatic – Vertical Grip

**Serial No:**

**Transposed Harmonised European Standards used:**

BS EN 12100 – 1&2:2003	Safety of Machinery – Basic concepts, general principles for design
prEN 983	Safety requirements for fluid power systems and components – Pneumatics
EN 349 : 1993	Safety of Machinery – Minimum gaps to avoid crushing of parts of the human body
BS EN 792-10	Hand-held non-electric power tools – Safety requirements – Part 14: Compression power tools

## Your attention is drawn to the following:

HCL warrants that a new HCL banding tool will operate per functional specifications for a period of sixty (60) days after the date of shipment to the owners place of business. Normal wearing parts, as outlined in the Operations, Parts & Safety manual, are also covered by a sixty (60) day warranty unless, in HCL's judgement, these parts have been subjected to abnormal or extreme usage. HCL's sole liability hereunder will be to repair or replace, without charge, F.O.B. HCL, Bath UK, any tool which proves to not operate per functional specifications within the stated period. HCL reserves the right to replace any tool which proves not to operate per functional specifications with a new or like-new tool of the same model, if in HCL's judgement such replacement is appropriate. Any new replacement or like new replacement tool provided to an owner will carry a full sixty (60) day warranty. Any warranty repaired tool will carry a warranty for the balance of time remaining on the initial sixty (60) day warranty. This warranty will be extended to compensate for the time the tool is in HCL's possession for warranty repairs.

This warranty is void as to any tool which has been:

- used on non-genuine HCL hose clamps
- subjected to mis-use, misapplication, accident damage, or repaired with other than genuine HCL replacement parts.
- improperly maintained, or adjusted, or damaged in transit or handling.
- used with improperly filtered, regulated, unlubricated air.
- in HCL's opinion, altered in a way that affects or detracts from the performance of the tool.

HCL MAKES NO WARRANTY, EXPRESSED OR IMPLIED, RELATING TO MERCHANTABILITY, FITNESS OR OTHERWISE EXCEPT AS STATED ABOVE AND HCL'S LIABILITY AS ASSUMED ABOVE IS IN LIEU OF ALL OTHERS ARISING OUT OF OR IN CONNECTION WITH THE USE AND PERFORMANCE OF THE TOOL. IT IS EXPRESSLY UNDERSTOOD THAT HCL SHALL IN NO EVENT BE LIABLE FOR ANY INDIRECT OR CONSEQUENTIAL DAMAGES INCLUDING, BUT NOT LIMITED TO, DAMAGES WHICH MAY ARISE FROM LOSS OF ANTICIPATED PROFITS OR PRODUCTION, SPOILAGE OF MATERIALS, INCREASED COSTS OF OPERATION OR OTHERWISE.

Considerable effort has been made to ensure that this product conforms to our high quality standards. However, should you experience any difficulties, please contact your Sales representative providing samples and the serial code specified on the tool.



**HCL – UK & Rest of the World**

Tel: +44 (0)1761 417714

Fax: +44 (0)1761 417710

Email: sales@hcl-clamping.co.uk

**HCL – North America**

Tel: 281-717-1145

Fax: 281-717-1146

Email: sales@hcl-clamping.com

COMPANY WITH  
QUALITY SYSTEM  
CERTIFIED BY DNV GL  
= ISO 9001:2015 =

Visit [www.hclfasteners.com](http://www.hclfasteners.com) to view our complete range of products.

©2019 HCL Fasteners. All Rights Reserved.

February 2019